

# LIVING UP TO THE EXPECTATIONS OF THE MOST DEMANDING YACHTSMAN

VIKING 58'  
CONVERTIBLE



 **viking**  
yachts



Salon-galley-dinette is sumptuous in Viking details: raised panel cabinetry, recessed halogen lighting, large wraparound windows complemented by the use of mirrors and lush fabrics.



The galley's recessed dishwasher, trash compactor and extensive countertops blend in beautifully.



Guest stateroom comforts: man-sized berths, overhead hatch and climate control.



Two full-sized guest heads — forward "en suite" head is shown.



The forward guest suite rivals masters in privacy and comfort with built-in TV, climate control and its own head.



"En Suite" master head has full length linen locker and flush mirror cabinet.



te tables.



The mid-ship master suite's royal treatment: king-sized bed, climate control, built-ins — lit vanity, TV, VCR and stereo.

Superiority lies in Viking's obsession with perfection. Using Computer Aided Design (CAD) and Computer Integrated Manufacturing (CIM), Viking handcrafts nearly all the 58'C's component parts on-site, ensuring total quality and delivering uncompromising fit and finish. Attention is paid to even rudimentary detail: solid steel engine beams and other metal components are finished with a baked-on powder-coating which is more durable



The 58'C is as comfortable a cruising yacht as it is a sportfisherman.

than urethane paints in combating corrosive elements.

#### **AN ENGINE ROOM AHEAD OF ITS CLASS**

Inside the bright, well-lit engine room, you'll find meticulous levels of engineering, sound-proofing and full serviceability. Convenient entry from the cockpit, stand up headroom and 360° walk-around access to mechanical systems makes routine checks and service quick and easy. All noise-making machinery is acoustically-isolated in the engine room (e.g. Viking's aqualift exhaust system snares



engine noise at its source). The acoustically-insulated composite engine room ceiling keeps sound from penetrating the salon.

#### **THE LESSONS OF A THOUSAND TOURNAMENTS**

Viking's sportfishing expertise appears throughout the 58'C's all fiberglass, low-maintenance cockpit. A walk-through transom door, tuna-sized recessed fishbox, molded-in tackle cabinet with top-loading freezer, bait-prep center-sink, waterproof tackle drawers, rod holders and washdowns are standard.

Fishability extends to the huge flying bridge, where the aft-mounted raised wraparound helm offers ideal visibility both over the bow and aft of the cockpit. A splash-proof console for flush-mounted electronics and Viking's System Monitor that alerts you to mechanical functions are within easy reach. Preferred up-front seating accommodates a dozen guests. An optional sleek Viking hardtop with overhead integrated electronics box tops this professional bridge.

#### **THE COMFORTS OF HOME**

One look inside the Viking 58'C and you'll agree: she is one beautiful yacht. The 58'C's commanding 18' beam makes the salon-galley-dinette an inviting place for living and entertaining. Viking's hallmark golden Burmese teak cabinetry and joinery is grain-aligned and satin-finished. The fully-equipped galley is designed so sink and appliances are concealed behind fine cabinetry.

The 58'C's three staterooms and three heads are a great place to relax. The master suite boasts entertainment center, vanity, walk-around king-sized bed and en-suite head with floor-to-ceiling linen closet. The guest suite with walk-around queen-sized bed rivals others' master staterooms in size. Each stateroom has climate controls, cedar-lined hanging lockers, and plentiful drawer storage.

The Viking 58'C Convertible lives up to your expectations of a flagship yacht. Her superb design, matchless performance, and Viking's meticulous attention to detail clearly makes her the queen of the seas. Prove it to yourself at your Viking dealer. Or call us at (609) 296-6000.



**WHAT MAKES A VIKING  
A VIKING**

You expect the most from your yacht. Consider size, speed, handling, and accommodations and choose the best. Your choice will be the Viking 58' Convertible.



*Pilot her to a fantastic fishing spot or cruising destination.*

Evolving from Viking's three decades of building thousands of yachts renowned for high performance, quality, engineering innovation and smart spacious interiors, the Viking 58'C is superior in her sportfishing and cruising abilities.

The Viking 58'C with plush three-stateroom, three-head interior has more standard features and space than yachts many feet longer.

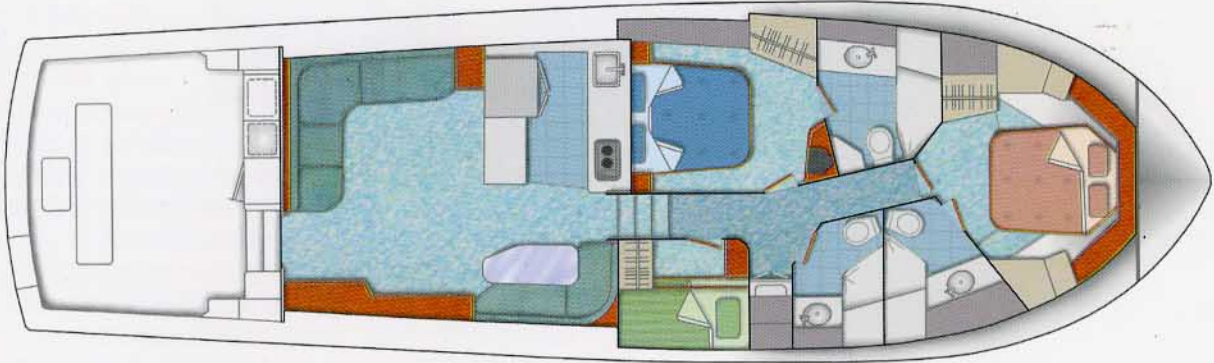
#### **PERFORMANCE PEDIGREE**

The Viking 58'C takes to rough water like a champ, and keeps you out fishing on days when others head in. Her unique refined hull shape has a deepened forefoot with razor sharp entry for a smooth ride, and reverse chines give excellent tracking and a steady platform when fishing. A fully flared bow pushes waves aside to help keep the bridge and deck dry. The aft-planing fairbody gets the 58'C on plane quickly, enabling her to go faster more efficiently. Ample tumblehome in the transom results in less wash when backing-down and better handling in a following sea. Power-assisted steering and controls yield responsive handling resulting in the maneuverability and quickness of a boat half her size.

## **FOR THOSE WHO KNOW BETTER**



**VIKING 58' CONVERTIBLE**



  
**viking**  
*yachts*  
For those who know better

Route 9 and The Garden State Parkway, New Gretna, NJ 08224, Tel: (609) 296-6000, Fax: (609) 296-3956

The right is reserved to make changes, without notice, at any time, in equipment, materials, prices and specifications. Line drawings and photos may show some optional equipment.



*When Only a Masterpiece Will Do*

 **viking**  
yachts

For those who demand the best.

*Viking 58 Convertible*

## There's No Substitute for Insight

Plato tells us that an unexamined life is not worth living. Similarly, at Viking we feel that an unexamined yacht isn't worth building. Now, a process of penetrating examination has culminated in the peerless three-stateroom, three-head Viking 58' Convertible.

For the passionate angler, unrivaled speed, range and offshore capability make the 58 the ultimate performance sportfisherman. For the family that travels to far-off places, luxurious accommodations make it a prestigious offshore luxury cruiser.

### Put Yourself in a Commanding Position

Available in both open and optionally enclosed versions, the 58's spacious 122 sq. ft. one-piece flying bridge puts the captain firmly in control. Offering peace and quiet and an incredible view, whoever said business and pleasure don't mix hasn't spent any time on the 58's enclosed flying bridge.

Providing three-level at-sea living, the climate-controlled enclosed bridge is a sea-going sky lounge. Guests will love the panoramic view and the luxurious lounge seating, refrigerator and built-in entertainment center; there's even room for a computer workstation. Enhancing passenger comfort and all-weather accessibility, spiral stairs to the salon—uniquely Viking in this class of yacht—are available in place of the starboard two-person lounge.

*"Once up and running, the 58 is an overgrown sports car, turning 180 degrees within a couple of boat lengths even with the throttles to the firewall. The 58 is proof positive that in boat building as in real life, little things do mean a lot."*

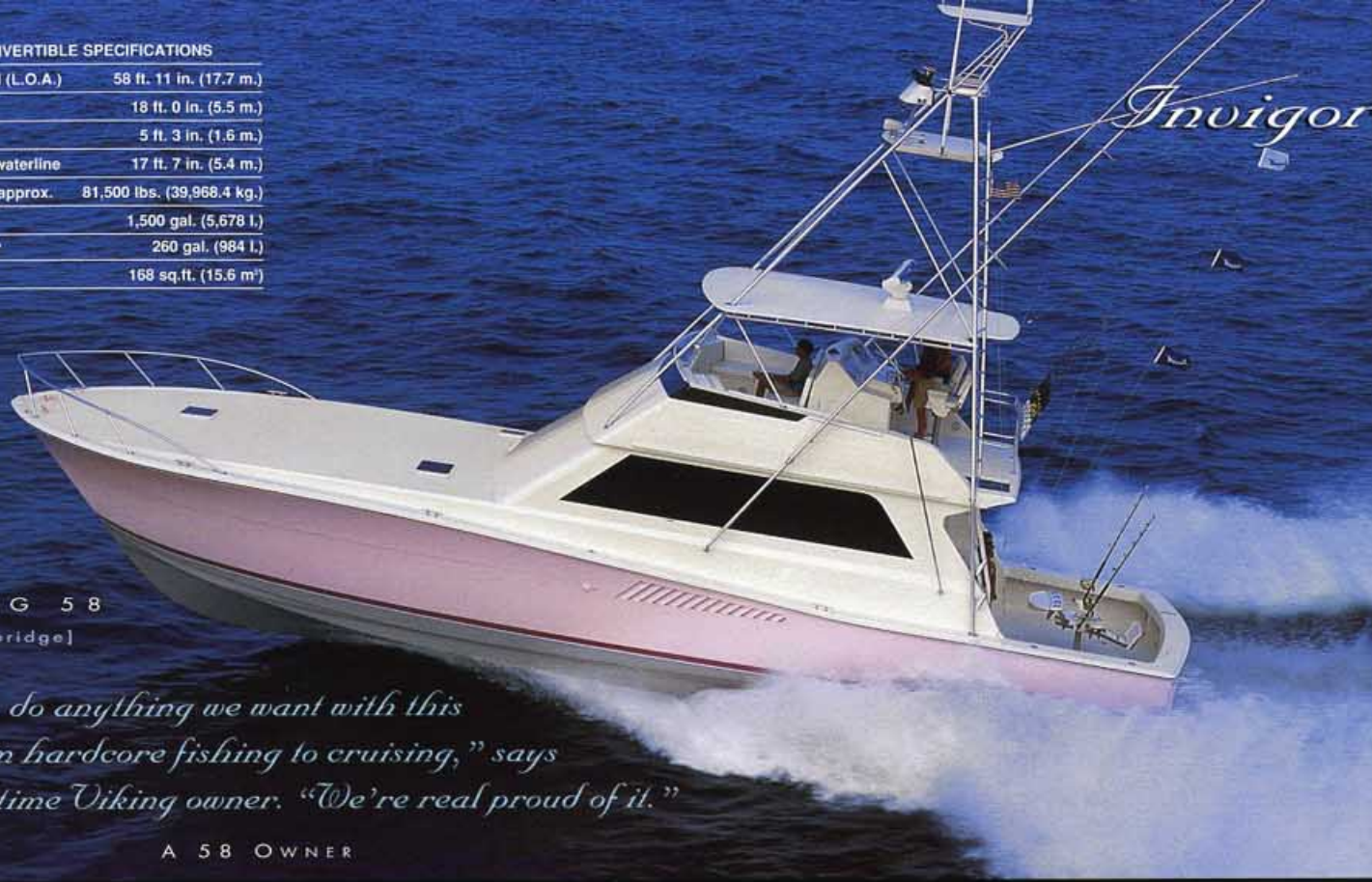


VIKING 58  
[enclosed bridge]



58' CONVERTIBLE SPECIFICATIONS

Length, overall (L.O.A.)	58 ft. 11 in. (17.7 m.)
Beam	18 ft. 0 in. (5.5 m.)
Draft	5 ft. 3 in. (1.6 m.)
Height above waterline	17 ft. 7 in. (5.4 m.)
Gross Weight approx.	81,500 lbs. (39,968.4 kg.)
Fuel capacity	1,500 gal. (5,678 l.)
Water capacity	260 gal. (984 l.)
Cockpit Size	168 sq.ft. (15.6 m <sup>2</sup> )



*Invigorating Open Space*

On the exhilarating open bridge, the centerline helm aft offers room for an extensive electronics suite along with an ideal vantage point above the cockpit. The extended overhang provides plenty of room around the helm seats, and there is lounge seating for twelve forward. A hardtop, full soft enclosure and recessed overhead electronics box are available to add an extra touch of civility and convenience.

*The Lessons of a Thousand Tournaments*

If the bridge is the heart of the 58, then the cockpit is certainly its soul. The 58's one-piece, uncluttered 168 sq. ft. cockpit testifies to Viking's long experience with tournament fishing. Forward is a top-loading freezer, tackle cabinet with bait prep center and centerline walk-in engine room access. A transom door, shorepower cable handling system, fresh and salt water washdowns, fresh water hookup, television and phone connection are included.

Serious sportfishermen will also appreciate the recessed Marlin-sized removable (and optionally refrigerated) fishbox and available circulating baitwell. The 58 is even available tournament turnkey ready right from the factory. "There's nothing else out there that even comes close," says one Viking 58 owner. "We've been amazed by the quality. It's an amazing boat and in our experience Viking really stands behind their product."

VIKING 58  
[open bridge]

*"We can do anything we want with this boat from hardcore fishing to cruising," says a three-time Viking owner. "We're real proud of it."*

A 58 OWNER



58



## *Retreat to Your Inner Sanctum*

While the 58 is all business outside, just step inside to be indulged by the exquisite 224 sq. ft. salon. This spacious great room with its single-level galley and dinette is the perfect setting for any occasion. The versatile U-shaped dinette complements the yacht's expansive interior with ample seating and storage room both underway and dockside. The available spiral stairs lead directly to the enclosed bridge above, seamlessly integrating these two major living areas. There's a wet bar with icemaker, an entertainment center, two lounges, and a large television which conceals away behind pocket doors. Generous storage

space throughout the yacht ensures there will be plenty of room for everything at your fingertips.

## *Rest with the Best of Them*

Each of the 58's three staterooms features full-length cedar hanging lockers, individual A/C and stereo controls, adjustable reading lights and overhead opening hatches. Built-in entertainment centers are also available. The three heads offer built-in mirrored medicine cabinets, enclosed showers, sinks with vanities, exhaust fans and plenty of storage room.



# Catering to Every Need

The unobtrusive galley keeps the chef fully involved in the day's activities. Full-size concealed appliances include a three-burner range, microwave-convection oven, refrigerator-freezer with icemaker, garbage disposal, exhaust fan, dishwasher and instant hot water. Storage space befits the 58's role as an extended-cruising yacht. "My husband and I both cook," says one owner, "and believe me when I say we lack for nothing on our 58. Usually we don't look forward to going back ashore."

## Personal Space

Situated amidships for the most comfortable ride, the master suite features a queen-size bed and a large en suite head. The guest stateroom forward also has a queen-size bed and its own en suite head. This stateroom is also available with either two or four upper-and-lower single berths. The third, twin berth guest stateroom has en suite head access and contains the washer-dryer. The third head is conveniently located at the bottom of the companionway stairs.



[master head]



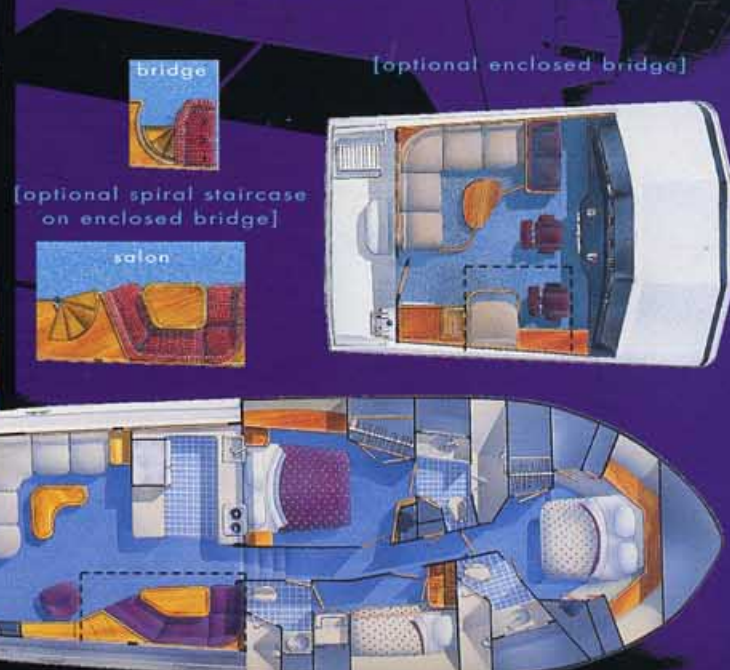
[master suite]



[starboard guest stateroom]



[forward guest stateroom]



## Performing Arts

Viking gave this thoroughbred a mission: go faster than the competition on less fuel for greater range and better economy. This allows more time on station before getting that trophy fish home in plenty of time for weigh-in.

Viking's well balanced hull form slices matter-of-factly through head seas while tracking as if on hidden rails with seas abaft the beam. Double chines keep her dry. Fairbody sections, reverse chines and a moderate 15 degrees of deadrise make the 58 extraordinarily stable, comfortable and efficient. A solid keel adds impact protection in case of accidental grounding.



VIKING 58  
[enclosed bridge]



Single-piece enclosed bridge being lifted from mold.

## Strength Through Unity

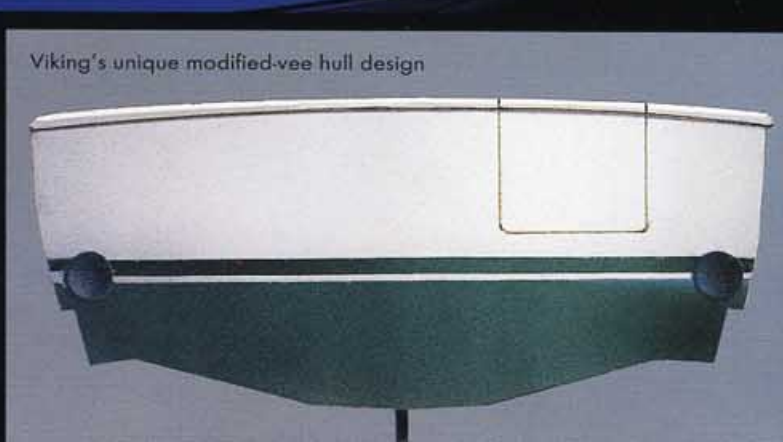
Composite construction used throughout the yacht blends great strength with significant weight savings for superior stability and performance. Structurally, the yacht has just two major components: the hull, and the one-piece deck-superstructure which extends from the bow pulpit to the cockpit liner. These two components become one when mechanically fastened and fiberglassed together. This same unitized construction is used in the one-piece enclosed flying bridge assembly.

*"Dazzled by the living arrangements, an inattentive observer might forget that this is a sportfishing boat. Not only is the boat fast, but she makes a quantum leap from idling to planing, leaping over the hump so fast that the crew isn't even aware of it."*

POWER AND MOTORYACHT  
January 1991

## Built for the Long Haul

Viking has built 3,500 yachts over the last three decades, and we're doing everything we can to close in on perfection. Viking's in-house design and engineering teams do it all in-house using computer aided design and manufacturing. In fact, 90% of each yacht is made by Viking for the ultimate in quality control.



Viking's unique modified-vee hull design

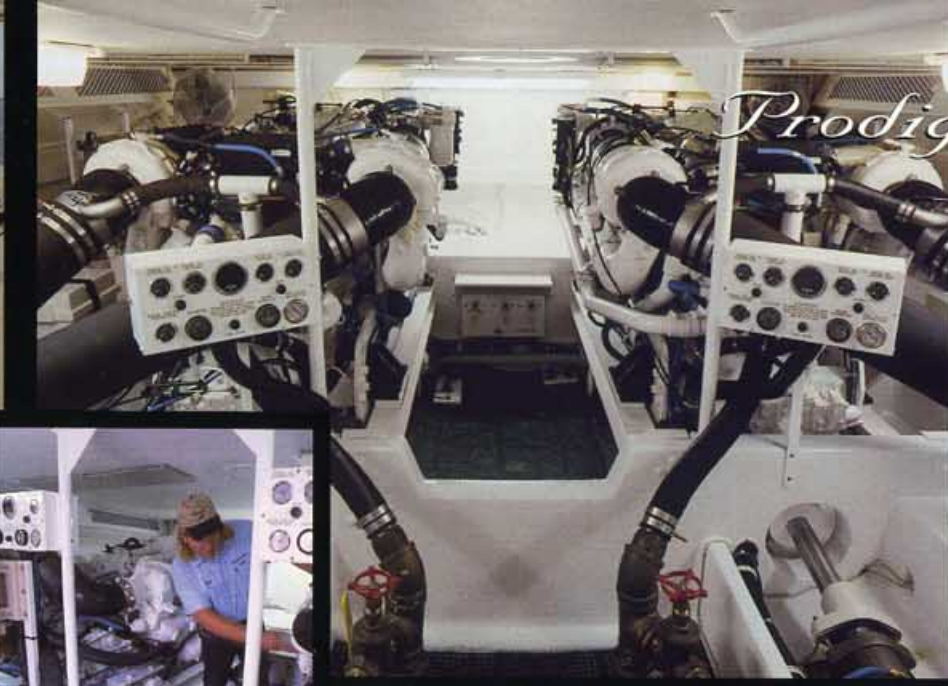
## Interiors to Match Your Personality

Viking's exclusive in-house interior decorator is available to help owners realize the yacht of their dreams. Working closely with each Viking Yacht owner, just the right ambiance is created using a wide range of designer fabrics and accessories. Cherished objects such as paintings and sculptures can be incorporated with the yacht's decor, becoming personal expressions of their owners' tastes and lifestyles.

*"Susan Kerns is wonderful to work with. She has exceptional taste which we felt was always at our service. She's marvelous."*



Susan Lockhart Kerns has been Viking's exclusive in-house interior designer for over 20 years.



# Prodigious Engineering

With convenient walk-in cockpit access, the Viking 58's ship-like all-white engine room with 71" headroom is a mechanic's dream come true. Neatly shrouded wiring and aircraft-type fuel lines are safely and unobtrusively routed through the engine room. Level engine room floors create flat work surfaces while many metal surfaces are powder-coated for incredible durability. Structural steel engine beds are mounted on low intermediate bulkheads, evenly transmitting their weight and thrust to the hull. Shaft angles are minimized, the yacht's center of gravity is lowered and engine access is improved.



*"For insight into how serious Viking is about tweaking the 58, look at the recessed pads for the running gear struts to appreciate the effort that goes into areas most boat owners never see. Areas you do regularly see—such as the engine room—are a boat building textbook."*

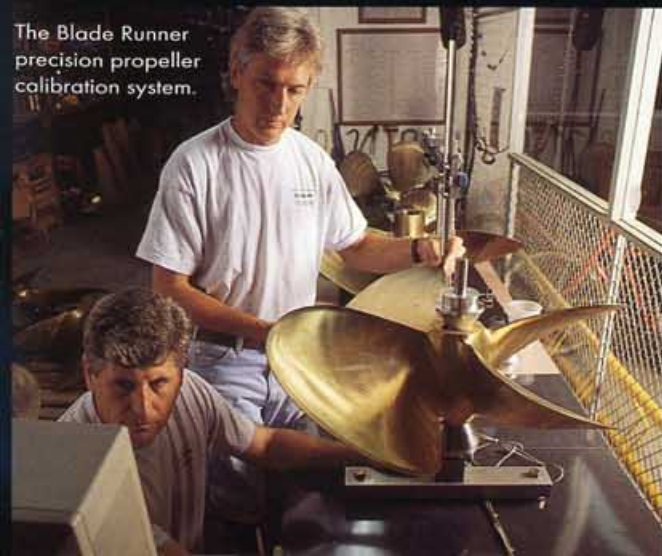
## Applied Innovation

Viking's corrosion-proof composite fiberglass fuel tanks maximize fuel system reliability while adding strength to the hull. Safety features include an automatic fire protection system in the engine room and lazarette. Cooling water intake Y-valves line up to the bilge if needed and they're located near the engine room entrance for quick access.



Composite construction produces tremendous strength at moderate weight while reducing noise levels.

Viking minimizes noise levels by placing machinery inside the acoustically isolated engine room. The 58's engine room ceiling/salon floor is a one-piece seamless composite deck which effectively absorbs sound. Generators are further isolated in their own acoustic enclosures. Not surprisingly, our competitors point to Viking engineering as the industry benchmark.



The Blade Runner precision propeller calibration system.



# 58

BOATING MAGAZINE  
July 1995

# Viking's Ongoing Pursuit of Perfection

At Viking, our notebook's not full yet. We listen to our customers who are the source of some of our best ideas. We watch the rest of the industry and we listen to our own people who put it all together in the best possible way. With our own on-site marina and proximity to open water, we scrupulously test every last detail from door latches to propeller struts. From concept to commissioning, it happens right here at Viking.

Since every owner has different needs, Viking also offers customized features such as hull colors, engine room work benches, stateroom offices and tailored helm layouts during construction. And after delivery, Viking's service and parts support are as good as the yachts themselves with an extensive dealer network standing behind them.

## Pure Inspiration

You could say that Plato's form of the perfect yacht was our inspiration when we built the 58. But we invite you to conduct your own penetrating examination. Take a close look and go for an enlightening test drive. You'll see how creating a masterpiece can be inevitable with the right inspiration.

*An advanced hull design, composite construction and an optimized drive train make higher speeds, longer ranges and roomier accommodations possible.*

*As a result, the 58 achieves the highest speeds possible with a smooth, quiet ride and the peace of mind that comes with owning the most finely engineered yacht available in the world.*



*"We're in no one's shadow. Today, we cast our own shadow in this industry."*

BILL HEALEY  
Viking President and Co-owner since 1964



"On the Bass River," New Gretna, New Jersey 08224 U.S.A. • Tel (609) 296-6000 • Fax (609) 296-3956

For full details and the name of the Viking dealer nearest you, contact Viking Yacht Company.

For those who demand the best.

The right is reserved to make changes, without notice, at any time, in equipment, materials, prices, and specifications. Accommodation drawings and photos may show some optional equipment.