
VIKING 90 CONVERTIBLE



90|C

 **viking**[®]
yachts

HEIR TO THE THRONE: THE VIKING 90

New Flagship Poised to Become the Next King of Large Sportfishing Yachts.

(Fort Lauderdale, Florida, October 27, 2021) —

The Viking 92 was arguably the greatest large sportfishing yacht of all time, with 21 boats delivered in seven years of production. The six-stateroom world-traveler merged convertible performance and fishability with megayacht luxury, proving that a Viking of its size could excel on the tournament circuit while providing the pinnacle of comfort.

Driven by its mantra to build a better boat every day, here comes Viking again with another example of excellence in boatbuilding design, engineering and innovation. The legendary New Jersey boatbuilder is proud to announce the all-new Viking 90, a yacht that will redefine the capabilities of the luxury convertible sportfisher and become the new benchmark in the genre.

“We’ve taken all the incredible qualities of the 92 – the interior layout, the accommodations, the style, the amenities – and merged them with greater performance, technology and versatility,” says Viking President and CEO Pat Healey. “The 92 was the Bentley. This is the Ferrari.”

THREE MODELS

The 90’s profile represents a synthesis of design traits from the 92, 80 and other modern Viking sportfishing yachts, as well as subtle motor yacht influences. “We designed the 90 to be as sleek as possible, stressing a low profile and clean lines,” says Viking Design Manager David Wilson. “We also brought several refinements to the exterior that enhance that lean, sexy look.” Carefully placed feature lines, deckhouse windows and portlights with chamfered edges and Viking’s signature hull-side vents are just a few of the 90’s aesthetic high points.

Viking will offer three models of the 90 (Open Bridge, Enclosed Bridge and Sky Bridge), all utilizing a spacious six-stateroom accommodation plan highlighted by a full-beam master suite.

“We feel the open bridge 90 is going to be a huge hit, particularly with our 80 owners,” says Pat. “We’re providing a larger Viking that fishes just as well as their 80 and has the same type of performance and nimble maneuverability.”

The Open and Enclosed Bridge 90 can be outfitted with a tuna tower from Palm Beach Towers (PBT), and all three models can be equipped with a custom electronics, communications and entertainment package from Atlantic Marine Electronics (AME). Both Viking subsidiaries, AME and PBT ensure turnkey delivery.

LOOKING AFT

The cockpit and dual mezzanine stress a sense of togetherness with a focus aft – where the action is. From the salon, a 40-inch-wide electric-powered single door opens with a touch of a button. The upper mezzanine’s port side is home to an L-shaped aft-facing lounge with available air-conditioned backrest and a teak table. On the starboard side, there’s a versatile cooking and refreshment hub (with an additional aft-facing seat) that can be personalized to the owner’s liking with a grill and icemaker or refrigerator.

A large lounge on the lower mezzanine looks upon the cockpit, with its shapely fiberglass module holding storage underneath and tackle drawers on each side. The mezzanine provides centerline engine access to the crew quarters and engine room, and is also home to an oversized freezer (port) and two refrigerated boxes (starboard).

The cockpit measures 224 square feet, with a 203-gallon transom fishbox/live well and a pair of full-length 103-gallon insulated in-deck fishboxes. Access to the Seakeeper 35 is provided by a single powered hatch on centerline, a watertight design introduced with recent Viking 80 demonstrator boats, and the cockpit sole is built with reinforcement for a fighting chair, rocket launcher or table.

LIVING LARGE

Viking owners and enthusiasts will be enamored with the accommodations of the new Viking 90. The combination of interior volume, a flowing open layout and several design nuances create a fresh soothing ambiance throughout the vast living spaces. Stepping into the salon, a new horizontal grain natural walnut interior greets you with warmth and style. Guests will appreciate the spacious lounge that begins at the salon door and wraps around the port side. A starboard-side entertainment center features a 65-inch pop-up HD TV. Forward, the large starboard wraparound galley is open to a raised U-shaped dinette to port (with rod storage below).

The Viking 90 offers five guest staterooms, each with its own private head and shower, crew quarters with immediate access to the engine room, a pantry with an additional crew berth and a day head. Spanning the 23-foot, 2-inch beam, the owner's suite boasts a king walkaround bed, a walk-in closet, a dressing table, a lounge

area, a full-size credenza under a bulkhead-mounted 65-inch HD TV and his-and-hers private facilities with separate access.

MIAMI 2023 DEBUT

"Constantly looking to the future, we embarked more than a year ago on this design," explains Pat. "It came at a time when international regulations would be taking effect that required Selective Catalytic Reduction (SCR) in the engine rooms of yachts with a 'load line length' greater than 24 meters.

"Understanding that suitable engine and SCR technology for this market was unavailable, the U.S. Coast Guard announced in March a three-year suspension of the regulations in North America. But the development of the 90, which does not require SCR, was already well underway and in 15 months we'll proudly present the next flagship of the Viking sportfishing fleet."

The Viking 90 will make her world premiere at the 2023 Miami Yacht Show.

““ The 92 was the Bentley.
This is the Ferrari. ””

– Patrick Healey
President and CEO

90 CONVERTIBLE



PRELIMINARY

90 SKY BRIDGE



PRELIMINARY

90 ENCLOSED BRIDGE



PRELIMINARY



Enclosed Bridge



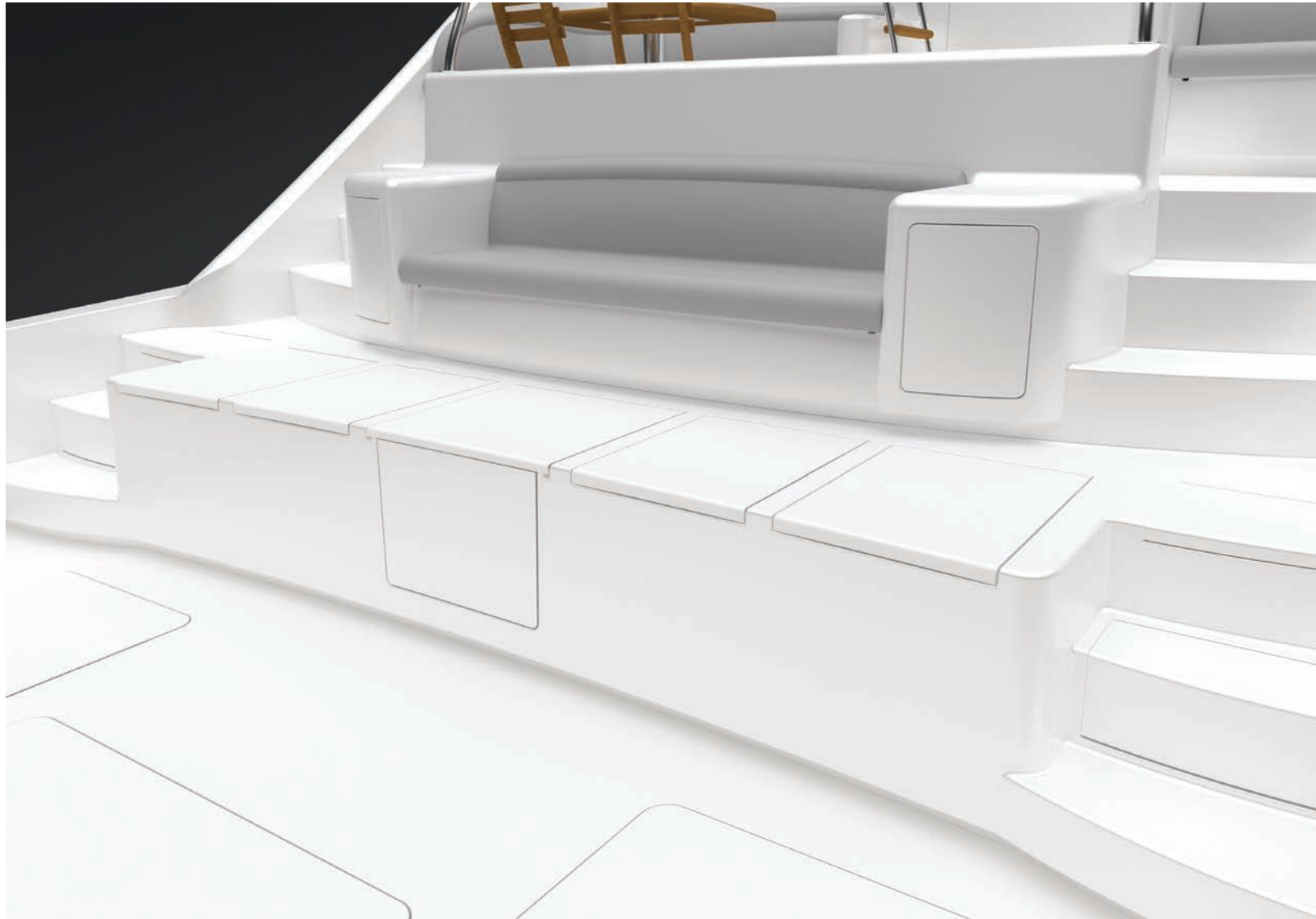
Enclosed Bridge Salon



Lower Accommodations

PRELIMINARY









KONECRANES
RCA

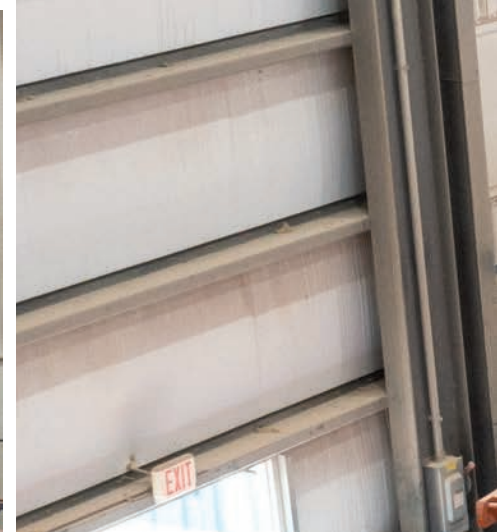
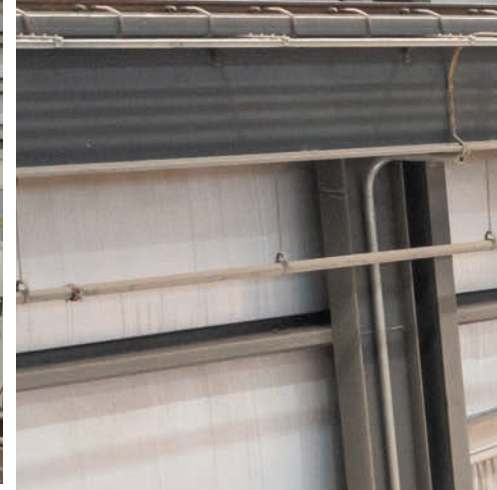
KONECRANES
BC7

10 TON

ISOMI

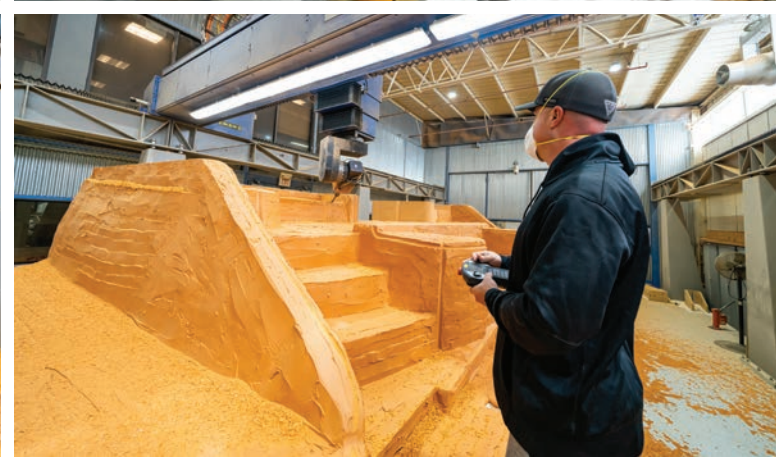




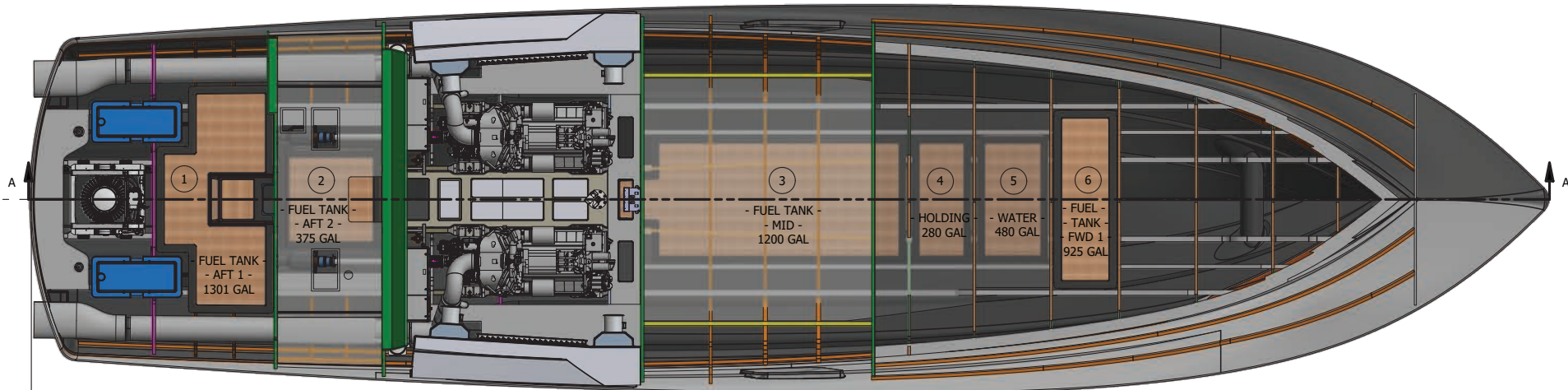




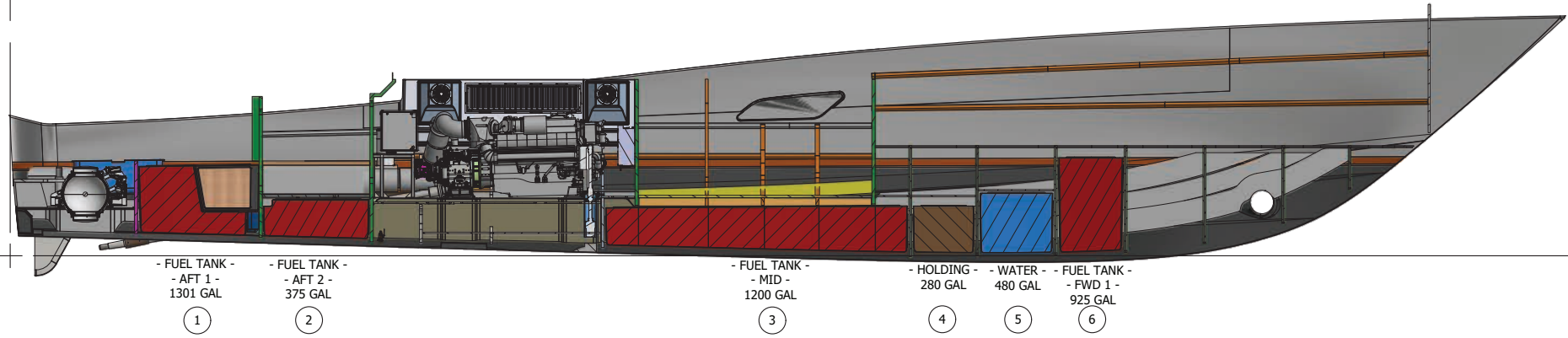




90 CONVERTIBLE



VIKING 90'C
FUEL STANDARD - 3801 GAL



PRELIMINARY

VIKING 90 CONVERTIBLE

Construction

- Ablative/Copolymer anti-fouling bottom paint (2 coats), using “Interlux Interprotected epoxy primer system”
- Aluminum mounting plate laminated into cockpit deck for fighting chair or table
- Awlgrip bronze thru-hulls and sea strainers
- Awlgrip engineroom, lazarette, forward bilge and anchor locker for enhanced visibility and easier maintenance
- Blister resistant modified vinylester resin in entire hull skin
- Custom blended polyester resin used in structural laminates, topsides, bridges and hardtops
- DuPont high gloss polyurethane boot stripe
- Fiberglass holding tank with dockside and overboard pump out
- Fiberglass side thru-hulls
- High gloss walnut interior finish throughout
- High performance isophthalic gelcoat npg superior gloss, flexibility and outstanding weathering characteristics

- Hull interior – isophthalic gelcoat top-coated with a durable high gloss polyurethane coating
- Hull infused using Baltek end-grain balsa, Airex foam core with Carbon and E-Glass Hybrid fiberglass laminates
- Infused fiberglass fuel, water and holding tanks, with fiberglass baffles inside and balsa coring on sides for stiffness, sealed to hull with resin foam
- Molded fiberglass salon and galley floors with foam core for acoustical and thermal insulation
- Propeller pockets to reduce draft
- Stringers, fiberglass encapsulated foam
- Transducer location molded into hull
- Vacuum bagged composite structural bulkheads

Mechanical

- Air conditioning – chilled water, 18 tons (three 6 ton units), zoned with reverse cycle heat for complete climate control throughout the interior and with individual temperature controls for

- staterooms and salon
- Air conditioning chiller system for aft crew quarters, 2 tons make up air system
- Bilge pumps with clean out pumps linked into monitoring system and connected to float switches for automatic and manual operation
- Bow thruster hydraulic with controls in single lever handles on open flybridge or joy stick on enclosed flybridge
- Centralized seawater system w/ dual pumps with Electrosea - Clearline System
- Deck pump out fitting and direct overboard pump out for holding tank
- Delta-T engineroom ventilation system with thermostatically controlled supply and discharge fans for proper fresh air circulation and water intrusion suppression
- Delta-T pneumatically controlled engineroom ventilation dampers, integrated into fire suppression system
- Dual stage variable speed

- 110V AC freshwater system with on deck freshwater fill and cockpit dockside supply inlet with pressure reducing valve
- Eskimo Ice Machine - #540 PD with discharge into mezzanine box
- Fire suppression system, automatically and manually operated and tied into main engine and generator ignition systems, aft mechanical compartment with override
- Freshwater filter – paper
- Freshwater supply in engineroom for general maintenance and cleaning
- Fuel and oil lines, flexible, steel reinforced USCG approved, aircraft type
- Fuel priming pumps for main engines, electric
- Fuel transfer and management system, 220V AC pump w/24V DC backup pump controlled through control panels
- Hour meters on main engines and generator
- Hydraulic bilge pump with manifold to forward, engineroom and cockpit bilge pick ups
- Internal sea strainers for generator

PRELIMINARY

- Linear exhaust system with oval transom outlet
- Mufflers – engine and generator, in-line type with surge tubes in engine room
- Oil changing system, gear type pump for main engines, transmissions, and generator with pump out line run to cockpit locker
- Parker FBO series filters for main engine selections
- PEX plumbing, freshwater system with manifold system to isolate individual areas
- Propellers, class “S” pitch tolerance (ISO 484/2 and dynamic balancing), advance design cambered blade sections for optimum performance. Nibral alloy for maximum durability
- Rudders, stainless steel, composite rudder bearing with dripless seal laminated into hull
- Seacocks, bronze, ball-type sea valves for all thru-hulls below the water line - Awlgrip white
- Shafts – 2 Aquamet high-strength stainless steel, double-taper with machined keyway and custom thrust plate at main engine couplings
- Steering system, Seastar

- Optimus electric power steering
- Struts – thru-water, Nibral with composite bearings
- Tides Marine water lubricated dripless shaft seals with crossover water supply from both engines
- Trim tabs, with center, port and starboard tabs recessed in transom, individual controls with fiberglass covers
- Wash down pump 110V dedicated
- Water heater, (2), 28 gallon, dual element for quick recovery
- Water maker, 1800 GPD w/ auto backflush and integrated into control system

Electrical

- 24V DC ship’s service throughout
- 240/110V Single phase AC power supply available throughout
- 110V outlet in engine room on aft bulkhead
- Anchor light/navigation lights
- Batteries, (3) independent 24V DC banks (engine, ship’s service and F/B electronics) mounted in fiberglass storage boxes, maintenance free
- Battery chargers, (3) with thermal cutoff and

- switching system for complete integration
- Battery distribution panel with battery cutoff and charging system breakers
- Battery parallel system for main engines and generator start
- Bonded electrical system with ground plate
- Color-coded, labeled and numbered wiring system with corresponding drawings
- Dimmers, DC interior LED lighting throughout excluding the companionway
- Dual 100 amp shore power cords with isolation transformers
- Engine room lights, DC with LED/AC backup with switch at engine room entrance
- Generators, Diesel – (2) 40 kW Kohler EKOZD with PGEN paralleling system
- Glendinning cablemaster for 100 amp shore cord, port and starboard
- Individual switching for shore (1), shore (2) or generator supply located in aft crew stateroom
- Instrument panel lights for flybridge and main electric panel
- Lighting, overhead LED lights recessed in ceiling

- and rope style décor lights concealed by walnut valances, 24V DC
- Magnetic switches for bilge lights
- Master electrical control provided via Power Distribution System utilizing a Can Bus control for AC/DC remote breaker electrical systems. Complete system control and monitoring provided by 3 integrated touch screen controls - (1) located at galley/dinette (1) at flybridge and (1) main in crew area
- Receptacles, 110V duplex with GFCI throughout

Flying Bridge Open (Standard)

- 24V and 12V DC dedicated power system to flybridge electronics
- Bench seating to port and starboard, with lounge forward of helm
- Bridge installed without exposed fasteners
- Center console walk-around helm with electronic storage
- Custom helm pod with single lever electronic controls
- Custom stainless steel steering wheel for helm pod
- Depthfinder/sea

- temperature gauge - Furuno RD-33
- Electronics box lids drilled and tapped for gas pistons instead of thru bolts
- Electronic trolling valve controls with auto troll
- Extended overhang for extra room to move behind helm and companion seats with anodized aluminum aft railing
- Fire system control with automatic and manual discharge and override system located at console
- Flush acrylic electronics panel for custom electronics package - easily viewable
- Freshwater outlet forward locker
- Freezer, top loading, under forward lounge for bait and/or food storage
- Handrail, powder-coated aluminum effectively positioned at helm console
- Helm and companion seats, 3 seats, teak, ladder back with 4" stainless pedestals and removable cushions and covers
- Instrumentation based on standard engine package, lighted with switches in radio box

- Lighted Ritchie compass, large and flush mounted on centerline
- Manual engine shutdown switches in radio box
- Nonskid deck for traction and durability
- Port and starboard cabinet at aft end of lounge seating
- Refrigerated top loading chill box aft end of port bench seat for keeping drinks and snacks cold
- Sink with spray head forward end bench seat
- Steering system, Seastar Optimus electric power steering
- Stereo 12V w/ speakers
- Touch screen control monitor with audible and visible alarms: fire, engineroom temperature, high bilge water, high exhaust temperature, high coolant temperature, low oil pressure, generator and tank monitors as well as confirming correct system operation
- Trim tab control switch mounted at console
- Trumpet style air horns, (2)
- Under helm access with lights and storage room
- VHF radio with antenna and mounts - ICOM
- Windshield, centerline venturi cutout to

maximize visibility

Flying Bridge Enclosed (Optional)

- Aft control station - console style with full engine controls, radio box for switches and recessed electronics. Custom pod with single lever controls and stainless steel steering wheel
- Aft facing jump seat for observation of cockpit
- Air conditioning aft bridge deck
- Air conditioning with reverse cycle heat, temperature control and dehumidification mode
- Cabinetry and furniture manufactured of walnut hardwood and veneers with furniture finish
- Central vacuum unit connection with hose fittings
- Cocktail table, walnut hi-lo with storage
- Companion seats, port and starboard jump seats with storage under seats
- Defoggers
- Door, sliding, exterior, weatherproof and lockable
- Flooring, carpet
- Forward control station with all necessary control switches, lighted instruments

and engine controls

- Hatch above helm chair
- Hatch in overhang with powder-coated ladder and access to hardtop
- Headliner, Baby Ostrich, gelato
- Helm chair, Stidd, black, ultra-leather, adjustable with footrest
- Large under helm area for easy access and added storage
- LED flood lights, molded-into aft overhang, recessed
- Lighting, overhang tri color (red, white and blue)
- Lounge, L-shaped with storage underneath
- Overhead recessed LED lighting
- Powder-coated aluminum aft railing and flybridge ladder
- Raised, wrap-around helm console with black ultra-leather surfaces and visor to reduce glare and access to all electronics components
- Staircase, interior from salon
- Steering wheel, top mounted, stainless steel
- Stereo, 12V w/speakers
- Touch screen control monitor with audible and visible alarms: fire, engineroom temperature,

high bilge water, high exhaust temperature, high coolant temperature, low oil pressure, fuel levels, generator and tank monitors as well as confirming correct system operation

- TV on lift mechanism
- Upholstered overhead wiper box with switches mounted centerline
- Upholstered valances, Baby Ostrich headliner
- Windows, fixed side and aft
- Windshield, laminated, safety glass side and aft glass tempered
- Windshield wipers, electric with intermittent controls, washers

Aft Deck Lounge

- Air conditioning supply in seat backs
- Escape hatch for aft crew stateroom
- Extended flybridge overhang for shade
- Ladder to bridge
- Large lounge seating with removable cushions and storage underneath
- Lighting, recessed tri color (red, white and blue) lights in flybridge overhang
- Removable cushions and storage below
- Salon door, electric

sliding - molded fiberglass with frameless window and walnut interior

- Stairs located port and starboard for access to mezzanine and cockpit
- Teak table with stainless steel pedestal

Cockpit and Mezzanine

- Access hatch to weather tight crew quarter door and engineroom
- Boarding box, fiberglass with nonskid, lift up top and storage
- Box for bait trays or open storage to starboard
- Cabinet with storage for gaffs and or other accessories under port and starboard gunwale
- Dockside electric connection - (2) 100 amp
- Dockside water connection with pressure reducing and valve to fill tank in cabinet under gunwale
- Drop-in in-deck storage boxes (1) port and (1) starboard
- Freshwater wash down with hose bib located in cabinet in port and starboard side lockers
- Gaskets for all lids and access doors
- Glendinning Cablemasters

in forward port and starboard cabinets under gunwales

- Indirect rope tri color (red, white and blue) lighting under coaming
- Lazarette hatch with access to steering, trim tabs, drain pumps
- Live well in transom box without window and light
- Lower mezzanine storage-large freezer (port), refrigerated undermount box and insulated box for ice storage (starboard)
- Molded nonskid deck
- Molded fiberglass stairs port and starboard for access to mezzanine and upper lounge deck
- Observation mezzanine with centerline aft facing lounge seating with vinyl covered cushions, hinged seats with storage under lounge area
- Recessed in deck fish boxes, port and starboard, removable with pump out and drain plate with large holes for easy pump out and cleaning
- Refrigerated drink box under mounted at top of stairs, port and starboard
- Reinforced recessed, stainless steel cleats and corner hawse pipes
- Rod holders, (4)

flush mounted

- Rounded cockpit coaming for comfort
- Seawater wash down
- Self bailing cockpit with large scuppers
- Stainless steel gas springs on all hatches and lids
- Stereo speakers tied into flybridge stereo
- Tackle cabinets with pullout drawers port and starboard of bench seating
- Transom swim steps at transom door
- Transom mounted fishbox, plumbed for live well with drain
- Y-valve fresh and salt water wash down

Salon

- Air conditioning with reverse cycle heat that circulates from concealed registers behind the valances to maximize comfort while minimizing noise and drafts - individual temperature control
- Blinds for desired natural lighting and additional privacy
- Cocktail table, walnut hi-lo with storage
- Flooring, custom Amtico at salon entrance and wall-to-wall carpeting with padding for

- sound absorption
- Home theater center with surround sound and 65" flat screen TV on lift mechanism
- Indirect decorative rope lighting behind valances, 24V/110V
- Lambrequins, fabric upholstered - inlaid in walnut frames
- Lighting, overhead LED lights recessed in headliner with dimmer switches
- Lounges, L-shaped (2), divided by storage cabinet and storage underneath
- Pillows and decorative throws for lounges
- Salon door, electric sliding-molded fiberglass with frameless window and walnut interior
- Upholstery and window treatments
- Valances custom walnut
- Wet bar with sink and ice maker
- Windows, fixed, frameless side windows with tinted, laminated glass-style, aft bulkhead windows tempered glass

Galley/Dinette

- Blinds
- Conventional oven
- Dinette table, fixed with rod storage drawer below

- Dishwasher
- Electric range, 4-burner cook top, surface mounted
- Exhaust fan, high velocity
- Flooring, custom Amtico
- Garbage disposal in sink
- Lambrequins, fabric upholstered - inlaid in walnut frames
- Large wrap around galley with refrigeration and freezers, engineered stone countertop and bar stools with overhang for bar stool area
- LED lighting-backsplash
- Lighting, overhead lights recessed in headliner
- Microwave/convection oven located in upper galley cabinet
- Refrigerator and freezer, Sub-Zero, large capacity, deep-drawer under-counter style with walnut faces, (2) refrigerator units and (1) freezer unit
- Sink, stainless steel, under mounted in countertop with chrome galley faucet
- Storage cabinets in upper galley
- Storage cabinets and drawers in lower galley
- Touch screen control monitor with audible and visible alarms: fire, engine room temperature, high bilge water, high exhaust temperature,

- generator and tank monitors as well as confirming correct system operation
- Trash compactor lower galley

Companionway

- Access to pantry forward of galley
- Access hatches to forward bilge and machinery areas
- Access to day head forward of dining area
- Awlgrip bilge areas Snow White and lighted for easier maintenance and cleaning
- Central vacuum unit connection with accessories
- Flooring, carpeted steps from galley through companionway
- Headliner, Majilite, natural color, 1/8" foam and tricot backing
- Laundry center, enclosed with full size stackable washer and dryer
- Lighting, overhead LED lights recessed in headliner with dimmer switches
- Staircase with banister for access to lower level and forward staterooms
- Wall panels, natural style vinyl headliner individually installed with Velcro backing for

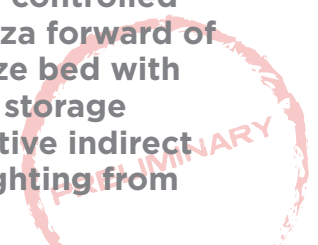
easy maintenance

Day Head

- Air conditioning/heat with register in soffit
- Countertop, engineered stone
- Exhaust fan with vent in soffit
- Flooring, custom Amtico
- Lights, overhead LED lights recessed in soffit and ceiling
- Lower vanity with walnut face
- Port side forward of dinette
- Sink, undermount with chrome faucet

Master Stateroom (Full Beam)

- Air conditioning with reverse cycle heat with temperature control
- Bed, king-size, walk-around fore and aft with Handcraft Viking Slumber #8 innerspring with pillow top
- Bedspread - quilted, designer style with pillow shams (2)
- Closet, large walk in, climate controlled
- Credenza forward of king-size bed with drawer storage
- Decorative indirect rope lighting from



- underneath bed platform and behind valances
- Drawer storage under bed, (2) large drawers
- End tables at port and starboard ends of bed with drawer and door storage
- Flooring, carpet
- Headboard, upholstered
- Lighting, overhead LED on lights recessed in headliner
- Lounge seat on port side with removable cushions for storage
- Port and starboard port lights
- Port and starboard side credenza with drawer storage
- Reading lights, overhead with separate switches
- Sheets (1 set)
- Starboard closet, walk in, maple-lined with walnut doors
- Stereo, independent with speakers
- TV, 65"
- Vanity/desk area with swing-out stool

Master Head

- Countertops, engineered stone with undermount sink and chrome faucet
- Exhaust fans with vent in soffit
- Flooring, custom Amtico
- His and Her head and

- vanity areas with separate toilets, undermount sinks and access from stateroom
- Large shower with glass enclosure and access from both port and starboard head areas with chrome hardware
- Linen storage
- Lower vanity
- Lighting, overhead LED lights recessed in soffit and in ceiling
- Medicine cabinets with mirrored doors
- Mirror around upper vanity insert
- Receptacle, 110V - GFCI
- Shower lights
- Towel bar and ring -chrome

Guest Stateroom (Port Forward)

- Air conditioning/heat with temperature control
- Beds, crossover with hanging storage under outboard upper bunk
- Bedspread - quilted, designer style with pillow shams (2)
- Decorative indirect rope lighting from underneath bed platform and behind valances
- Flooring, carpet
- Hanging locker, walnut, maple-lined
- Lighting, overhead

- LED lights recessed in headliner
- Mattress, Handcraft Viking Slumber #6 innerspring
- Private head with stall shower
- Reading lights with separate switches
- Sheets, (1 set)
- Speakers with feed from main audio system
- Storage drawers under bed, (2) large drawers
- TV
- Walnut shelf

Guest Stateroom (Starboard)

- Air conditioning/heat with temperature control
- Bed, queen-size walk-around with Handcraft Viking Slumber #6 innerspring and lift up top with gas pistons and maple-lined storage underneath
- Bedspread - quilted, designer style with pillow shams (2)
- Credenza with drawer storage forward
- Flooring, carpet
- Hanging locker, maple-lined with bar for hanging clothes
- Lighting, overhead LED lights
- Private head with stall shower

- Sheets, (1 set)
- Speakers with feed from main audio system
- TV on forward bulkhead

Guest Stateroom (Forward)

- Air conditioning/heat with temperature control
- Bed, queen-size walk-around with Handcraft Viking Slumber #6 innerspring and lift up top with gas pistons and maple-lined storage underneath
- Bedspread - quilted, designer style with pillow shams (2)
- Decorative indirect rope lighting from underneath bed platform and behind valances
- Flooring, carpet
- Hanging locker, walnut, maple-lined
- Hatches, one (1) Bomar, foredeck hatches, with Ocean Air screen shade system
- Lighting, overhead LED lights recessed in headliner
- Private head with stall shower
- Reading lights with separate switches
- Sheets, (1 set)
- Speakers with feed with main audio system
- Storage drawers under

- bed, (4) drawers
- TV
- Upper port and starboard storage lockers outboard
- Walnut shelves

Guest Heads

- Air conditioning/heat with register in soffit
- Countertop, engineered stone
- Exhaust fan with vent in soffit
- Flooring, custom Amtico
- Lighting, overhead LED lights recessed in soffit and in ceiling
- Lower vanity
- Medicine cabinet with mirrored doors
- Mirror around upper vanity insert
- One-piece custom frameless shower door
- Receptacle, 110V - GFCI
- Shower light
- Sink - undermount with chrome faucet
- Stall shower, fiberglass with chrome fixtures
- Storage cabinet with shelves and mirrored door in master head
- Towel bar and ring - chrome

Captain's Stateroom/Head (Port Aft)

- Air conditioning/heat with register in soffit

- Bed, full size athwartship with Handcraft Viking Slumber #6 innerspring and lift up top with gas pistons and maple-lined storage underneath
- Bedspread - quilted, designer style with pillow shams (2)
- Countertop in head, engineered stone
- Decorative indirect rope lighting from underneath bed platform and behind valances
- Flooring, carpet
- Hanging locker, walnut, maple-lined
- Lighting, overhead LED lights recessed in soffit and in ceiling
- Private head with stall shower
- Reading lights with separate switches
- Sheets, (1 set)
- Speakers with feed from main audio system
- TV
- Upper port and starboard storage lockers outboard
- Walnut shelf

Aft Crew Stateroom/Head

- Access via mezzanine and machinery room with weather tight swing door
- Air conditioning/heat with temperature control
- Bedspread - quilted,

- designer style with pillow shams (2)
- Engineroom access door with window
- Full height storage locker
- 3/4 Hanging locker, walnut, maple-lined
- Lighting, overhead LED lights recessed in headliner
- Main electrical panel with AC and DC selector breakers, monitoring and touch screen control
- Overhead escape hatch to aft deck lounge
- Private head with sink, stall shower, and linen storage
- Reading lights with separate switches
- Sheets, (1 set)
- Speakers with feed from main audio system
- Storage drawers
- TV
- Upper and lower bunks to port
- Walnut shelf

Decor

- Blinds
- Designer bedspreads for all beds
- Designer shams (2) per stateroom (3 for VIP forward layout)
- Designer fabrics
- Fabrica carpet, nylon fibers with Scotchgard protection

- and stain release
- Headliner, Majilite, upgraded throughout
- Passage doors, hardware - bright chrome
- Throw pillows throughout including designer cords and fringes
- Towel bars and ring - chrome
- Ultraleather sofas in salon, dinette and master stateroom
- Upgraded window panel fabric and trim
- Viking Prestige Décor package

Miscellaneous

- Anchor - Manson
- Anchor locker with windlass and anchor storage in bow stem
- Bonding system anode on transom
- Bow rail, anodized aluminum, brushed finish
- CO2 detectors throughout
- Fire extinguishers (8)
- Freshwater wash down at bow in anchor locker
- Fuel
- Holding tank monitor
- Magnetic switches for lights in all forward bilge compartments
- Mooring lines, 3 strand nylon (6)
- Ships bell
- Shore cord, 100 amp to 50 amp smart



- Side mounted, wrap around grabrails, powder-coated aluminum that follow the window line
- Smoke detectors
- Stainless steel bow, spring and stern cleats thru-bolted to aluminum backing plates
- USB receptacle (Apple compatible) in staterooms and salon
- Viking one year limited warranty (available upon request)
- Windlass, incorporated into anchor locker
- Water delivery kit with tool set



For the most up to date information on the new 90 Convertible, scan this QR Code.



SPECIFICATION HIGHLIGHTS

Length Overall	90' 0"	27.41 m
Length w/ Bow Pulpit	95' 0"	28.96 m
Length Waterline	79' 2"	24.13 m
Length Load Line (96 Percent)	76' 1"	23.20 m
Beam Overall	23' 2"	7.05 m
Beam Waterline	19' 3"	5.86 m
Deadrise at Transom	12.4 deg	
Draft	5' 11"	1.80 m
Freeboard Forward	9' 0"	2.75 m
Freeboard Aft	3' 1"	0.94 m
Height Waterline to Top of Enclosed Bridge Masthead Light	26' 4"	8.03 m
Height Waterline to Top of Enclosed Bridge	21' 2"	6.45 m
Displacement Open Bridge, No Tower	193,490 lbs.	87,766 kg
Displacement Enclosed Bridge with Sky Bridge	203,659 lbs.	92,378 kg
Fuel Capacity Standard	3,801 gal.	14,388 l
Water Capacity	480 gal.	1,817 l
Holding Tank Capacity	282 gal.	1,067 l
Cockpit Area	224 sq. ft.	20.8 sq. m

OPTIONAL EQUIPMENT

BASE PRICE: \$10,350,000

STANDARD POWER: CAT C32A 1925: 1925MHP

INTERIOR

- Satin interior finish throughout N/C
*Standard will be high gloss Horizontal
Natural Walnut
- Full beam, six stateroom STD

COCKPIT

- Air conditioning, mezzanine 26,690
- Refrigerate starboard mezzanine live well 3,805
- Swim platform & ladder 13,560
- Transom lettering POR NET
- Window and light in transom box
live well 6,050 NET

DECK/EXTERIOR

- Additional (2) foredeck hatches w/ sunshade 2,630
- Custom hull color, gelcoat38,090
- Davit, (2200lb), with hydraulic lift and
rotation with telescoping127,040 NET
- Salon forward window mask 24,540

DECOR (S)

- Custom decor POR
- Classic decor, accessory kit 16,315
- Elite galley, accessory kit 4,350
- Mirror ceilings in master head 9,345
- Wallcovering, custom POR

OPEN FLYING BRIDGE

- Helm air conditioning with reverse cycle heat .. 27,890
- Release teak helm pod6,930

ENCLOSED FLYING BRIDGE 334,800

- (8) Rod rocket launcher 2,210
- Lights, remote spotlight 2,420
- Radar mast 19,490
- Release teak helm pod for aft station 6,930

SKY BRIDGE POR

SALON

- Carpet runner - full POR
- Carpet runner - partial 5,430
- Carpet runner - companionway and steps 3,230

GUEST STATEROOMS

- Crossover forward stateroom arrangement 8,035

CREW STATEROOM - AFT

- Microwave/refrigerator 6,810
- Washer/dryer combo in place of storage2,460

DELIVERY

- Propellers, (spare with storage boxes and
Prop Smith removal/installation tool)94,630

ENGINE ROOM

- Headhunter heads N/C
- Seakeeper 35 option POR
- Upgrade generators to P-Gen System POR

OPTIONAL POWER

- MTU Series 2000 V16 M96L 2635MHP POR
- CAT C32B 2400: 2433MHP..... POR



“ We designed the 90 to be as sleek as possible, stressing a low profile and clean lines. We also brought several refinements to the exterior that enhance that lean, sexy look. ”

- David Wilson
Design Manager



DISCOVER THE VIKING DIFFERENCE – EXPERIENCE AND PRIDE.

The Viking Yacht Company is located on the Bass River, a winding marsh-lined tributary, which feeds into the Mullica River and flows into the Great Bay. About 50 minutes by boat to Atlantic City, the wilderness of the Bass River is a stark contrast to the leading-edge technology that precedes every Viking leaving New Gretna. Building a better boat every day has been Viking's philosophy for more than five decades, and this is why Viking leads the industry today in performance, innovation, engineering and luxury. And Viking will also lead tomorrow because its commitment to excellence is reflected in the "Viking Difference."

Family Business: Brothers Bill and Bob Healey founded the Viking Yacht Company in 1964 and it remains family owned and operated. Bill's son, Patrick J. Healey, is the CEO and President of the Viking Yacht Company. Robert Healey Jr., who is Bob's son, is the Executive Co-Chairman of the Viking Group. Viking Yachts answers only to its unyielding commitment to build the finest boats money can buy. Pat's sons, Sean and Justin, are now fully involved in the day-to-day operations of the company and represent Viking along with their father at fishing tournaments and boat shows.

State-of-the-Art Facilities: The Viking plants in New Gretna and Mullica stand out as the pinnacle of boat manufacturing achievement, with modern buildings, state-of-the-art machinery and the space to build over 30 models from 33 to 93 feet. From multiple CNC routers for cutting composite and wood parts to a \$1 million five-axis profiler, which creates foam plugs to build complex molds, Viking clearly defines cutting edge. And yet, with a dedicated, talented and skilled workforce, the human element is equally dynamic. Our key personnel in manufacturing, design & engineering, sales and human resources have been working together for decades.

The 90 Percent Factor: Over 90 percent of every Viking is designed and manufactured in-house, resulting in the production of the world's finest sportfishing and motor yachts. Whether it is a fiberglass fuel tank, a wiring harness labeled every eight inches or a hull-to-deck joint through-bolted every three inches, you can be sure of incomparable quality.

Front and Center: An engineering-driven company, Viking thrives on the pulse of innovation and the development of new and exciting product. We have the youngest fleet in the marine industry that consists of ground-breaking boats. Our passion for boatbuilding has led to the development of an entirely new Viking brand of fishing boats - high-performance center consoles - through the Viking subsidiary of Valhalla Boatworks at our Mullica facility.

Total Focus: The Viking demonstrator boat program plays a crucial role in carrying out the company mantra of building a better boat every day. Competition in big-game tournaments around the world helps Viking show our boats, learn from them, improve them, represent and support the Viking customer base, represent the company globally and maintain and grow its leading position in the industry.

Quality Control: Viking holds an inherent quality-control advantage because the company manufactures most of the yacht's components in-house. In addition, dedicated personnel thoroughly inspect each yacht during the build process. This type of attention to detail ensures greater reliability, safety and customer satisfaction.

Best in the World: We often say that we have the best dealer network in the world - and for good reason. We have nine domestic dealers in 43 North American locations and more than a dozen international dealers throughout the world.

Finest Service: Experienced service personnel with an intimate knowledge of onboard systems stand behind every Viking Yacht. You never go to sea alone when you own a Viking. In addition to the Viking Customer Service Department and Viking Yachting Center in New Gretna, we operate the Viking Yacht Service Center and the Viking International Yacht Center on the Intracoastal Waterway in Riviera Beach, Florida. It's just minutes from Palm Beach Inlet; our two service complexes handle warranty, fiberglass and running gear repairs. Staffed by Viking-trained professionals, Viking is the only manufacturer to provide its owners with a satellite facility solely for their convenience.

Resale: Top-shelf engineering enables Vikings to deliver value, not only when you are using it, but at resale time as well.

Vertical Integration: To complement the Viking experience, we have created two sister companies. Palm Beach Towers designs and crafts the finest aluminum tuna towers, custom railings, fiberglass hardtops, drop-down electronic boxes, flush-mounted electric teaser reels and a host of other specialized items. Atlantic Marine Electronics is the premier source for Viking installed navigation, communication and entertainment equipment. By specifying Palm Beach Towers and Atlantic Marine Electronics for your accessories, you are assured one-stop shopping and will enjoy the absolute bliss of taking delivery of your new Viking turnkey ready.

Lead Not Follow: In the marine industry, we don't just raise the bar. We are the bar. Viking incorporates the best in design and performance to manufacture the finest semi-custom yachts in the world. From technical advancements like virtual tank testing and designer touches such as curved doorways and exquisite joinery, Vikings are the epitome of luxury and seagoing excellence. Come visit our family of boatbuilders and discover the Viking Difference.



Please contact your Viking dealer to arrange a sea trial and a tour of our modern facility on the Bass River near Atlantic City.

Route 9, On the Bass River • P.O. Box 308 • New Gretna, NJ 08224
Phone: 609.296.6000 • Fax: 609.296.3956 • vikingyachts.com

The right is reserved to make changes, without notice, at any time, in equipment, materials, prices and specifications. Accommodation drawings and photos may show optional equipment. Performance may vary depending upon conditions.